



NEWSLETTER

OCTOBER 2020

Letter from the Editor

Hello and welcome to October's edition of WEAG news. The lecture program got off to a great start with Claire and Lee giving us an interesting talk on medieval church wall paintings in Essex – I will be looking with new eyes when I next visit a church. How did you find accessing the lecture? Obviously, we miss the personal interaction of our usual venue but if you have any questions for the speakers please forward them to me. If you missed the talk click the link to view the recording:

https://1drv.ms/v/s!ApJ2MDzoO_pTgQShbrWM4EF0otgG?e=KAqGbl

This month's lecture is another first – a live Zoom held at the usual time with you being able to log on from approx. 7.15 with the lecture commencing at 7.30. Georgina Green is talking on 'Highams House and its occupants' with a follow up lecture in January on 'Humphrey Repton at Highams' – I'm sure you know that Highams House is now Woodford County High School where we usually meet for our lectures. Georgina Green is a local historian and has taught in adult education in Redbridge and Waltham Forest about the local area. She has also written several books and as an old schoolgirl of Woodford County High School has a particular interest in the building. Look out for the email with instructions on joining the lecture.

Autumn Garden Afternoon at Copped Hall

Copped Hall are opening the gardens for a slightly extended Autumn Garden Afternoon on Sunday 11 October. Note that this will be the last opportunity to visit the gardens this year. Please see WEAG Key Events (page 3) and poster attached for details.

Articles

This month we are pleased to include Part 4 of Lee's article on the 'M11'. Do you have anything to contribute to the newsletter? However big or small we would welcome your input – please do get in touch via lexie.lyons@icloud.com.

December Newsletter

We would like to produce a bumper newsletter for the December edition and are looking to you for articles, write ups of this year's activities, drawings, quizzes, photos, old articles etc, please get in touch.

WEAG Member Profile

Would you like to be 'our profile on a member'? If so email me on and I'll forward you the questions.

Stay In Touch

weag.org.uk

[Facebook.com/westsexarchaeology](https://www.facebook.com/westsexarchaeology)

[Twitter.com/WEAGarchaeology](https://twitter.com/WEAGarchaeology)

[Instagram.com/weag_archaeology](https://www.instagram.com/weag_archaeology)

Anything you'd like to contribute to the WEAG Newsletter or if you have any comments on the new format, please email lexie.lyons@icloud.com

WEAG'S WORK ON THE ROUTE OF THE M11

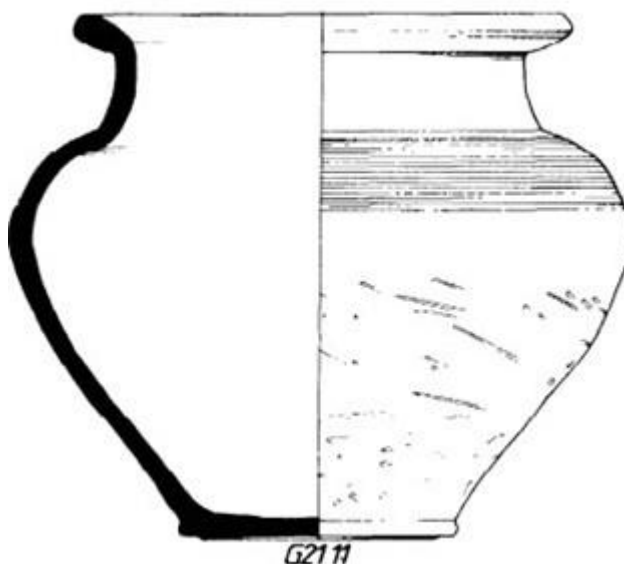
PART 4: GOOSE LANE, LITTLE HALLINGBURY

submitted by Lee Joyce

The site was discovered when a scatter of Roman pottery was observed during fieldwalking in 1972 and excavated the next year. It was a complicated site with an Iron Age hut circle found beneath a complex of Roman ditches and the foundation of a Roman wattle and daub building 4x2.5m across. A single coin dating to 148- 9AD and 10 dating to circa 258-285AD provide the dating of the Roman occupation, the Iron Age evidence is in the form of flint tempered pottery that dates to 800-400 BC. An unusual or even unique clay object that to this day still puzzles all who see it, is a Zoomorphic or even anthropomorphic Figurine. The figure clearly has two eyes, two ears, a nose, a mouth and even possibly a bellybutton. The enigmatic nature of the object has led to various interpretations. Is it a physical (all be it crude) representation of the cremated individual, or something akin to a ushabti to protect and serve in the afterlife or being made of local clay is it exemplifying some bond between the individual and his ancestral land? The answer is we will simply never know. The figurine is clearly bonfire fired perhaps as part of the cremation ceremony itself. It was found inside one of the two vessels that would have been used as cinerary urns.



The pots themselves are a type of Roman cooking pot known as a G21 'Braughing' jars. The type is very long-lived (1st to 4th centuries), and exhibits a slow evolution from the squat, high-shouldered 1st century forms with short necks and small rims (e.g. Partridge 1981, fig 44.15), to tall 4th century forms with a sharply inset neck and a thick out turned or angled rim (e.g. M Wilson 1972, fig 137.1238-9) much more like ours. Although there is much variation, the earliest examples are often decorated with irregular all over riling, which is restricted in 2nd century and later examples to a band on the upper body or shoulder. The Braughing jar, is so named for their abundance in the excavations of the Roman town of Braughing (Partridge 1981). A common product of the south east Herts pottery tradition made in large numbers at local sites such as the Much Hadham pottery kilns just 8 miles from the Goose Lane site. The pottery and coin evidence together suggest a date for the burial and therefore the figurine of somewhere in the third quarter of the third century. If you wish to see these objects for yourself, they are on display at the Bishops Stortford Museum.



References.

Betts, T A. M11 Motorway sites. Essex Archaeological news Autumn 1974

Going, by CJ. Chelmsford Archaeological Trust Report 3.2 CBA Research Report 62 The Mansio and other sites in the south-eastern sector of Caesaromagus: the Roman pottery

Lydamore, C. A votive figurine from Little Hallingbury

Partridge, C, 1981 Skeleton Green. A late Iron Age and Romano-British site, Britannia Monograph Ser, 2

Robertson, Ian G. 1976. The archaeology of the M11 Motorway in Essex, 1970 – 75.

Wilson, M, 1972. The other pottery, in Frere 1972, 263-370

WEAG CALENDAR OF EVENTS

Key Events

Sunday 11 October 2020 – 12pm–4pm

Copped Hall, Crown Hill, Epping, CM16 5HS
'Autumn Garden Afternoon'

To reflect the latest Coronavirus restrictions, Copped Hall are opening the gardens for a slightly extended Autumn Garden Afternoon. This will be the last opportunity to visit the gardens at Copped Hall this year. Refreshments, light lunch, and a licensed bar will be available. Plants will be for sale in the Walled garden.

For more information visit www.coppedhalltrust.org.uk

Lecture Program

Talks will be accessible via the internet and NOT in person at the usual venue, further details to follow. We'd like your help in summarising each of the remote talks/lectures to be included in the following newsletter for those members who do not have internet access.

Lectures are in the committee room at Woodford County High School, High Road, Woodford Green, IG8 9LA at 7:15pm unless otherwise stated.

Non-members are welcome to attend Lectures. A voluntary contribution of £2 would be appreciated from guests.

Monday 12 October 2020 @ 19:15 via Zoom

'Highams House and its occupants'.

Speaker: Georgina Green. Zoom joining instructions will be sent via email nearer the time

Monday 9 November 2020 @ 19:15

'Non-Invasive Archaeology'. *Speaker: Melinda Barham.*

Monday 7 December 2020 @ 19:15

Social (book sales and refreshments) and roundup of member activities.

Monday 11 January 2021 @ 19:15 via Zoom

'Humphrey Repton at Highams'. *Speaker: Georgina Green.*

Monday 8 February 2021 @ 19:15

'Bricks in Essex'. *Speaker: Anne Padfield.* Anne is a local historian and English Heritage guide at Hill Hall.

Monday 8 March 2021 @ 19:15

AGM and 'Progress in the last 12 months at Bankside Rose'. *Speaker: Harvey Sheldon, Birkbeck College, WEAG President.*

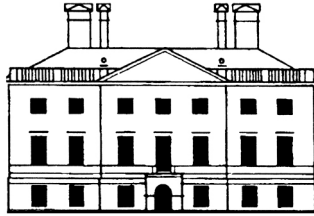
Monday 12 April 2021 @ 19:15

'Historic Cultural Landscapes in South West Essex'. *Speaker: Tricia Moxey.*

Monday 10 May 2021 @ 19:15

The Rudge Lecture – 'to be announced'. *Speaker: Mike "Mr Stonehenge" Parker Pearson.*

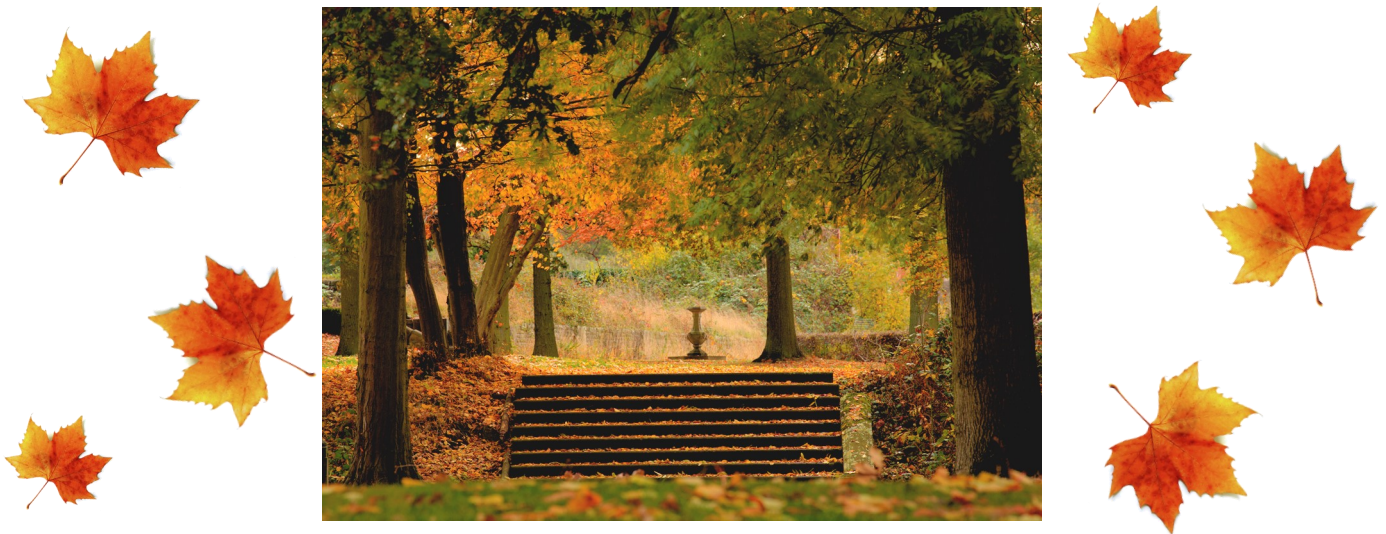
2020



THE COPPED HALL TRUST
CHARITY REGISTRATION NUMBER 1065569/0
www.coppedhalltrust.org.uk

AUTUMN GARDEN AFTERNOON AT COPPED HALL

Sunday 11th October 2020



To reflect the latest Coronavirus restrictions, we are opening our gardens for a slightly extended Autumn Garden Afternoon. This will be the last opportunity to visit the gardens at Copped Hall this year. Refreshments, light lunches and a licensed bar will be available. Plants will be for sale in the Walled garden

Access to the mansion is not allowed at present.

Entrance by timed prepaid ticket only - £6 per person - accompanied children under the age of 16 have free entry. (Friends of the Copped Hall Trust have free entry, but must still apply for tickets). **Gates open from 12 noon until 4pm.**

Apply for your tickets online at: coppedhallevts.ticketsource.co.uk

Access from the gates in Crown Hill (Upshire Road) only.

For satnav use postcode: CM16 5HR

Visit our website: www.coppedhalltrust.org.uk

Do not disturb the Lodge owners for entry under any circumstances