



# NEWSLETTER

June 2025



## Letter from the Editor

**Hello everyone! Welcome to the June Newsletter.**

This edition has a list of next seasons upcoming lectures, as usual a wide and varied range of subjects is covered. As in recent years the meetings will be a mix of Zoom and in person events.

We also have a brief summary of our excavations work at Copped Hall so far this year by Lee Joyce and a report on the Magnetometry survey of the lower lawn by Melinda Barham and David Wood.

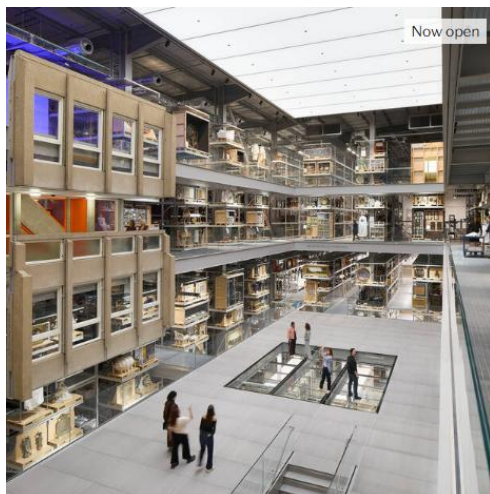
There are also details of two upcoming events. A fascinating Lecture by Martin Millet “The Romanization of Britain Revisited” at Copped Hall and the “Festival of Essex Archaeology and Heritage 2025” at Cressing Temple Barns. WEAG hope to have a stall at the Cressing event and also at the Epping Town Show, see below for details.

Last but not least our recommended exhibition is the new permanent Museum in East London the V&A East Storehouse.

## What's on locally?

For information on museum and local historical societies visit. <http://www.weag.org.uk/events/whats-on-locally>

## Recommended Exhibition



**V&A East Storehouse is your access all areas experience of the V&A collection. Go behind the scenes and take your own path through the worlds of art, design, performance, fashion and more.**

### V&A East Storehouse

*Parkes Street, Queen Elizabeth Olympic Park, Hackney Wick, London, E20 3AX*

#### Opening times

Daily: 10.00 – 18.00  
Thursday and  
Saturday: 10.00 – 22.00

#### Admission is free

Some exhibitions and events will carry a separate charge

## WEAG CALENDAR OF EVENTS

### Lecture Program

We plan to run a mixed program of in-person and zoom lectures and where possible hybrid meetings. All meetings are on the second Monday of the month at 7.30 at Woodford County High School for Girls, (WHCS) unless otherwise stated.

For Lecture Meetings shown as 'Zoom', the Zoom details for that meeting will be circulated to WEAG members a few days before the meeting. Non-members are welcome to join in the Zoom meetings (for a £2 contribution).

**Lectures are accessible via Zoom at 7:15pm**

Contact [membership@weag.org.uk](mailto:membership@weag.org.uk) for more details.

**8<sup>th</sup> SEP. Jason Stewart - A Geo-Archaeology of London - in-person**

**13<sup>th</sup> OCT. Dominic Perring - Who Built London and Why? - in-person**

**10<sup>th</sup> Nov. Richard Bale - Romans - Zoom**

**1<sup>st</sup> Dec. Our annual collection of short talks from members.**

**12<sup>th</sup> Jan. Simon Elliott - Septimus, Hammer of the Scots - Zoom**

**9<sup>th</sup> Feb. Vanessa Harding - Mapping London after the Great Fire of 1666 - Zoom**

**9<sup>th</sup> Mar. AGM and talk from WEAG President Harvey Sheldon - Zoom**

**13<sup>th</sup> Apr. Tom Cromwell Rutland update (Roman villa) in-person**

**11<sup>th</sup> May. the Rudge lecture by Dr Sam Lucy of Cambridge University. East Anglia in the 7th Century.**

**8<sup>th</sup> Jun. Harry Platts - Romford Roman road - in-person**



## **Archaeology at Copped Hall 2025**

It has been good start to the year for the WEAG and The Copped Hall Trust Archaeology project (CHTAP). As archaeologists we are usually to be found looking down in a muddy trench but over the last month the CHTAP (Copped Hall Trust Archaeology Project) have had the luxury of being in the sunshine in the sunken rock garden, working on the Tudor walls that form the southern extent of that garden.



These remains were excavated by the County Archaeology Unit back in 1984, but for most of the intervening years have been covered with thick ivy. The need for the ivy to be thinned out provided us with an opportunity to examine the standing remains and to assess any deterioration in their condition that may need to be treated. When cleared the walls turned out to be in remarkably good condition considering they are around 500 years old, and it was found that the ivy, far from damaging the structures, had proved a great defence against the elements. The work on these walls is likely to be finished in the next few weeks and our records passed on to the Trust to inform future work in the area. Work on the thinning of bamboo within the sunken garden has revealed yet more Tudor masonry. The walls within the sunken garden form part of the basement of the Tudor house and while work on this has not yet begun but will be our next project.



Over the summer we will again run a number of training digs for those new



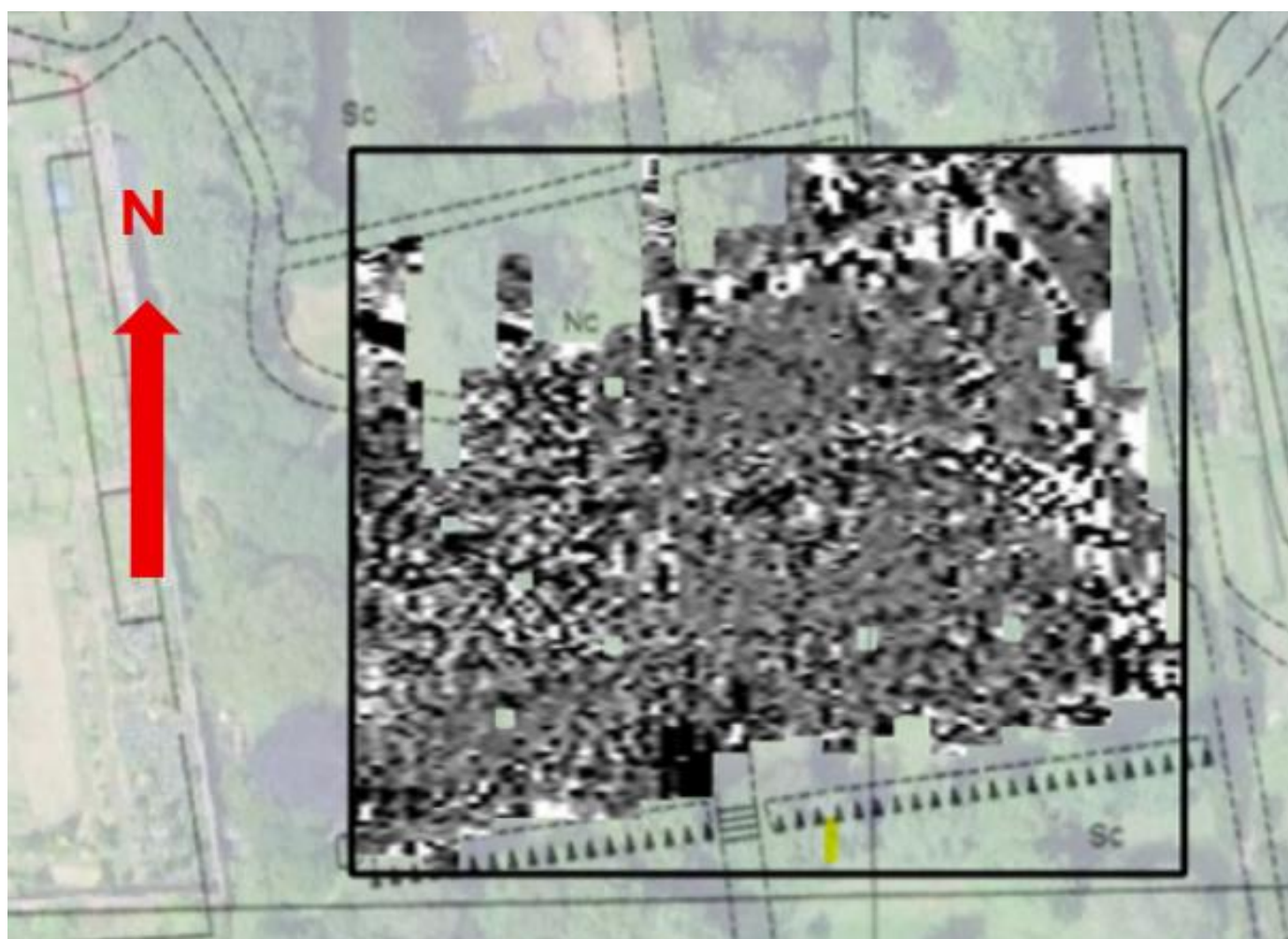
to archaeology, alongside our annual research excavation. This year we will be returning to two areas previous excavated, firstly the old staircase on the change of level that has been the focus of our work over the last few years and secondly, we will return to the interior of the west wing for the first time in a decade to investigate what is believed to be (based on the pictorial evidence) the last building phase of the old Copt Hall. All this should take us up to November, when we will move inside the mansion and continue our work on digitising the archive, processing the finds and keeping the paperwork up to date. All in all, an exciting program that should add greatly to our knowledge of the old hall, its construction and its evolving landscapes.

Lee Joyce

## **Magnetometry Survey on the lower lawn**

Being on site on Sundays has given us the opportunity to get some digging undertaken. However, we also spent a day in May carrying out a magnetometry survey of the Lower Terrace.

Detailed magnetic surveys can be used effectively to define areas of past human activity by mapping spatial variation and contrast in the magnetic properties of soil, subsoil, and bedrock. Although the changes in the magnetic field resulting from differing features in the soil are usually



*Figure 1 - Grids 1-6 on QGIS with satellite (Google Earth) and OS overlay*

weak, changes as small as 0.1 NanoTeslas(nT) in an overall field strength of over 48,000 (nT), can be accurately detected. Factors affecting the magnetic survey may include soil type, local geology,

previous human activity, disturbance from modern services etc. In the case of pits and ditches, the accumulated fill will have subtly different magnetic properties from that of the background, resulting from disturbance and increased moisture and humic material in the fill. This difference in the magnetic signal is detected and recorded by the instrument. The survey was carried out using a Bartington Grad 601-2 Dual Fluxgate Gradiometer with an onboard automatic DL601 data logger. This instrument is a highly stable magnetometer which utilises two vertically aligned fluxgates, one positioned 1m above the other. This arrangement is then duplicated and separated by 1m cross bar. The dual arrangement allows for rapid assessment of the archaeological potential of a site. Data storage from the two fluxgate pairs is automatically combined into one file and stored using the onboard data logger. The data was then processed to fine-tune the readings.

The survey area was marked out and recorded using tape measures and a sighting compass. The survey grids were 40mx40m wherever possible, only being reduced in size at the edges where a full 40x40m grid could not be achieved, either due to vegetation / trees or on the terrace bank between the Upper and Lower Terrace as it was too steep to walk safely. The two eastern grids were only surveyed up to the yew hedge (King Henry's Walk).

All grids were aligned at 3600 / 1800 (magnetic (declination +0.470)). Any enhancements to the magnetic field caused by buried features are mapped increasingly stronger the closer the traverse direction can get to a magnetic north / south direction. Data was collected by making successive parallel traverses across each grid in a zigzag pattern.

The resulting output pictures are presented with positive nT mapped as black and negative nT mapped as white. The data has been corrected and processed using numerous filters.

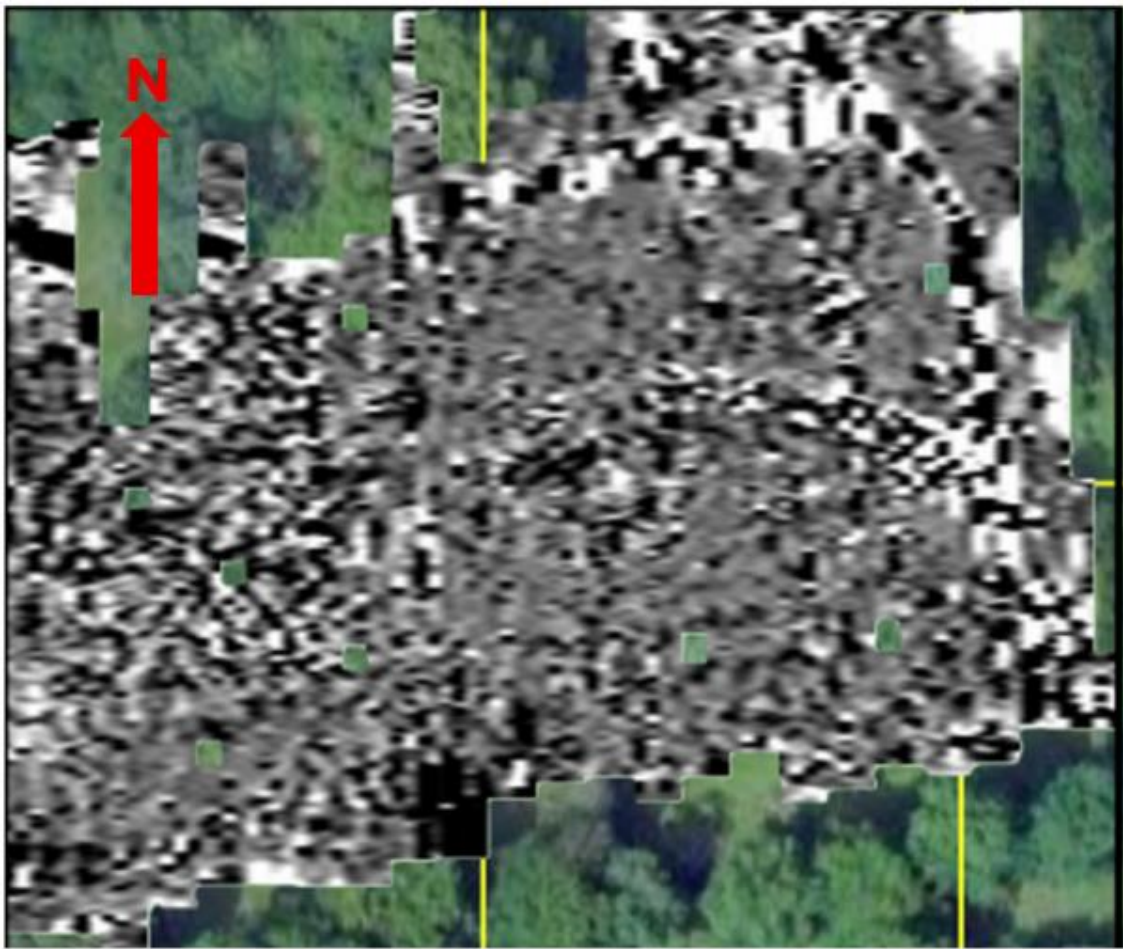


Figure 2 - Grids 1-6 on QGIS with satellite (Google Earth)

Several anomalies come immediately to the eye –

- The north eastern area has a series of positive and negative responses appearing in a pattern – these are likely to be service pipe runs, probably for drainage.
- To the north of these we just catch part of the, previously excavated, Dove cote.
- The eastern half of the survey area shows a previously unknown arching feature, circa 40metres diameter, but this seems to peter out the further west you look. It appears to be a substantive feature, perhaps a track / roadway.
- On the western half of the survey area appears much ‘busier’, but it is possible that a pattern can be seen, perhaps flower beds with small paths in between?
- On the north western edge, either side of the north arrow, is a very strong signal, could this be a continuation of the service / pipe runs from the east, or something else, structural?
- In the southern grids a distinct, just off east / west, linear feature can be seen, on ground this is noted as the current drainage run.

However, the initial interpretation of features should always be considered cautiously as the human brain is capable of pareidolia, the ability of some humans to see shapes or make pictures out of randomness! But it looks like we have a number of possible new digging locations to keep us busy for the next few years in order to establish what these features are.

It is hope that we will be able to survey the Upper Terrace as part of this Summer’s experience weekends.

Melinda Barham and David Wood

WEAG are hoping to have stalls at two upcoming events. The first is the Epping town show and the second the first Festival of Essex Archaeology and Heritage

## Upcoming events



### EPPING TOWN SHOW

SUNDAY 6th JULY 2025

12 NOON TO 5PM

Stonards Hill Recreation Ground,

Stonards Hill, Epping CM16 4QE

Free entry

Stalls, entertainment, arena acts, music, refreshments, funfair, animals, characters, Punch & Judy and much more...

Email: [info@eppingtowncouncil.gov.uk](mailto:info@eppingtowncouncil.gov.uk)

Tel: 01992 579444

WEAG’s stall at the  
Loughton Town Show last  
year





## **Festival of Essex Archaeology and Heritage 2025**

Place Services at Essex County Council are excited to announce the very first Festival of Essex Archaeology and Heritage

A fantastic new and FREE festival for anyone with an interest in archaeology, history and the heritage of Essex – young and old.

Encounter some of the country's leading experts and those involved in discovering, preserving and presenting the best of the county's heritage. Meet experts and browse finds, enjoy children's activities and re-enactments, talks, tours and so much more.

**With over 20 exhibitors taking part. Including many of the county's museums, archaeological societies and Heritage interest groups.**

**There are also lots of short talks taking place throughout the day, including....**

Flint - An Amazing Material

An Introduction to Tree-Ring Dating Buildings

Boudicca and the Gold & Silver Treasure

Earls, Bishops and Generals - Interesting People from Rayne's Past

A Roman Dodecahedron from Harlow

Forever and For Everyone - An Introduction to the Essex Record Office

Late Iron Age/Early Roman elite burials near Chelmsford

Roman Chariot Racing

A Middle Bronze Age Settlement at Heybridge

Archaeology in Essex - Recent Finds and Discoveries

From Salt to Satellites - An Intro to Essex's Industrial Heritage

## **Event details**

### **Cressing Temple Barns**

Witham Road, Braintree, Cressing, Essex, England, CM77 8PD

July 24, 2025 10:00am - 5:00pm

**Who for?** For the whole family

**Prices** Free entry to general event. Some talks and workshops will need to be booked in advance.

**How to book** On line at <https://www.eventbrite.com/cc/the-festival-of-essex-archaeology-heritage-2025-4301923>

# **THE ROMANIZATION OF BRITAIN REVISITED**



with Professor Martin Millet FBA, MAE

Date

Sunday 10th August 2025

Doors Open 1.30pm for 2pm start.

Cost

£15 per person

Location

Mansion – 1st Floor Saloon. Access currently is only via staircase as there is no lift. Please contact the Box Office if you believe access may be a problem.

Description

In recent decades archaeology has revealed a mass of new evidence

about Roman Britain, shedding new light on the full range of life in the Roman province. Alongside this, conventional views about the imposition of Roman culture on Britain have come into question, and the respective roles of the Roman state and indigenous people have been re-evaluated. In this lecture, Professor Martin Millet will examine some of the new evidence and changing interpretations with particular reference to the local region. Professor Martin Millet FBA, MAE is Emeritus Professor of Classical Archaeology Senior Fello, McDonald Institute for Archaeological Research, Life Fellow, Fitzwilliam College University of Cambridge Faculty of Classics. Early booking is recommended.

Event Queries

Please contact the Box Office on 07749 397932

or email: [events@coppedhalltrust.org.uk](mailto:events@coppedhalltrust.org.uk)

Buy Tickets

Tickets are only available via Ticketsource.

<https://www.ticketsource.co.uk/coppedhallevnts>

View the event, pay and print your tickets.

Both debit and credit cards may be used.

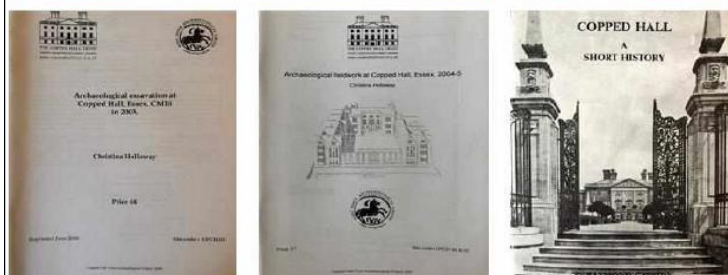
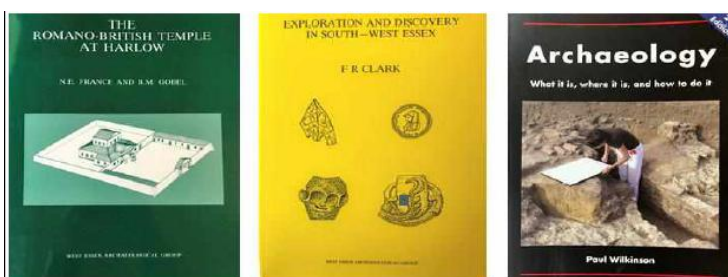
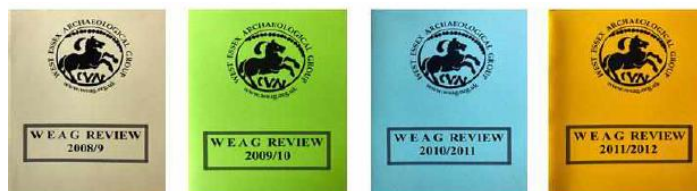
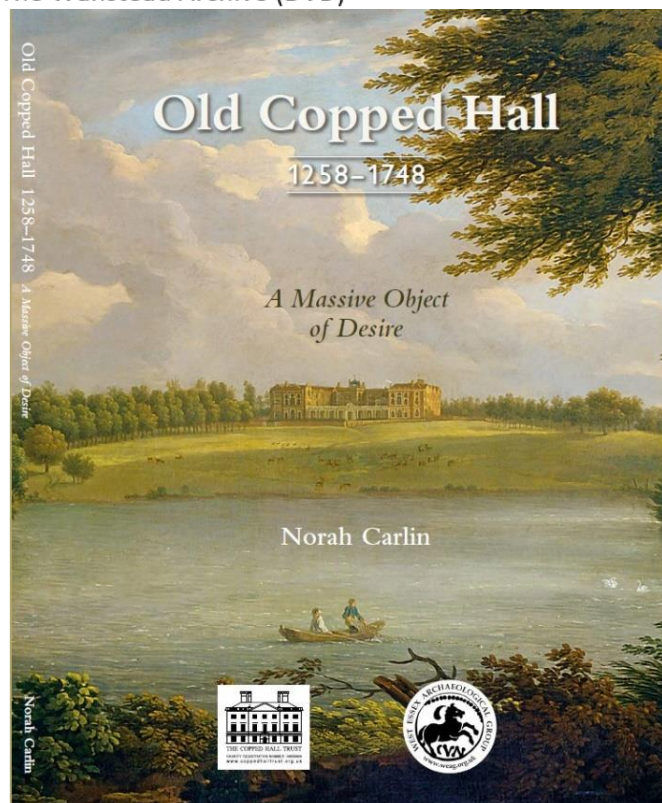
If you are having problems, please contact the Box Office on 07749 397932

or email: [events@coppedhalltrust.org.uk](mailto:events@coppedhalltrust.org.uk)



## BOOK SALE

	RRP	Special Offer Price
Old Copped Hall from 1258 to 1748	£25.00	£20.00
The Romano-British Temple at Harlow	£ 7.00	£ 3.50
Exploration and Discovery in South West Essex	£ 7.00	£ 3.50
Archaeology – what it is and how to do it	£ 9.50	£ 8.50
Copped Hall Report 2003	£ 4.00	£ 2.50
Copped Hall Report 2004 / 5	£ 7.00	£ 2.50
Copped Hall – A Short History (Cassidy)	£ 2.50	£ 2.50
Annual Review 2008/2009	£ 0.50	£ 0.50
Annual Review 2009/2010	£ 0.50	£ 0.50
Annual Review 2010/2011	£ 0.50	£ 0.50
Annual Review 2011/2012	£ 0.50	£ 0.50
Wanstead Park – Revealed (DVD)	£ 3.00	£ 1.50
Wanstead Park – Living Park (DVD)	£ 3.00	£ 1.50
The Wanstead Archive (DVD)	£ 3.00	£ 1.50



### Contacts

#### Membership

Contact: [weagmembership@outlook.com](mailto:weagmembership@outlook.com)

Taster Weekends and Field Schools

Information: [coppedhalldigs@weag.org.uk](mailto:coppedhalldigs@weag.org.uk)

Treasurer: [treasurer@weag.org.uk](mailto:treasurer@weag.org.uk)

Webmaster: [webmaster@weag.org.uk](mailto:webmaster@weag.org.uk)

**Emergency Phone Number: 07802 711 703**